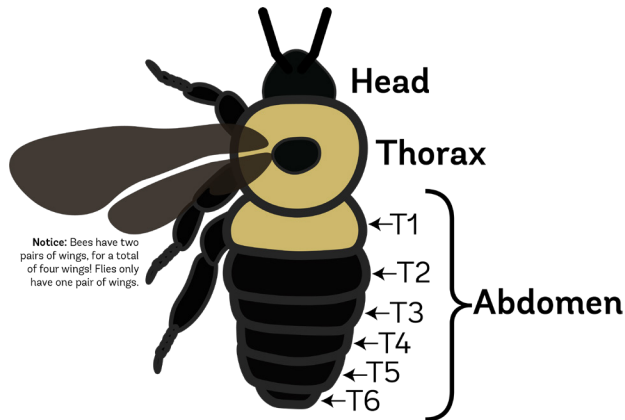


# Rhode Island BUMBLE BEES

## Bumble Bee Anatomy



Bumble bee species are most often identified by the colors on each band (T1, T2, etc.) of their abdomen.

## Bumble Bee Quick Facts

- Around 250 species in the world (21 found on the continental United States)
- Adults feed on nectar and feed their larvae pollen
- Considered generalist pollinators (they pollinate lots of plants!)
- When winter comes the colony dies off and the mated queen overwinters underground until the next season begins
- Important pollinators for food crops (like tomatoes!)
- Can forage in cold, cloudy, or rainy weather

## *Bombus fervidus* yellow bumble bee

- **Nest:** under and above ground
- **Queens:** active April - May and August - September
- **Workers:** active May - October
- **Identification:** largely yellow abdomen
- Rare species of bumble bee



### Other less common bumbles include:

- *Bombus vagans*
- *Bombus perplexus*
- *Bombus pennsylvanicus* (the rarest of our bumble bees!)

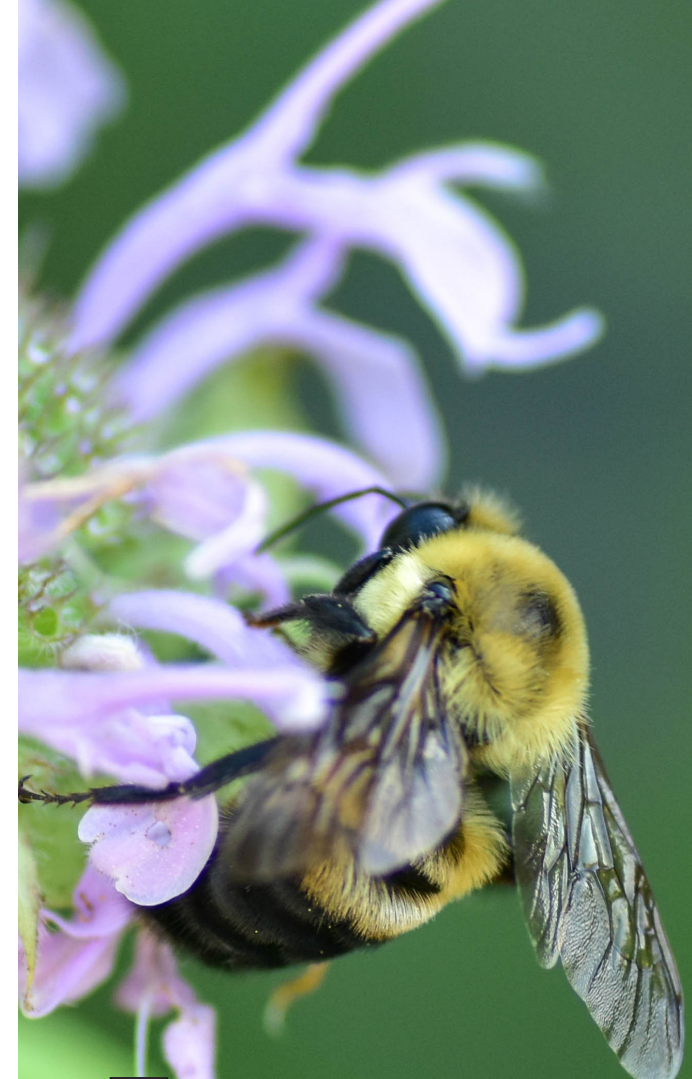
Research reported in this pamphlet was supported by RI NSF EPSCoR/C-AIM and the Providence College Walsh Student Research Fellowship.

### Learn More!

Reference collection of other RI pollinators



Visit the PC Pollinators website!



PROVIDENCE  
COLLEGE

Prepared by Alexa Pudlo  
and Dr. Rachael Bonoan in  
association with Providence  
College and The Westerly  
Land Trust



Flickr: rachaelbonoan

## *Bombus bimaculatus*

two-spotted bumble bee



- **Nest:** mostly underground, can also nest above ground
- **Queens:** active April - July
- **Workers:** active May - June
- **Identification:** one full yellow T1 band followed by a partially yellow T2 band
- Often confused with *B. impatiens*



Graphics: Jeremy Hemberger  
[www.jhemberger.github.io/graphic\\_art](http://www.jhemberger.github.io/graphic_art)

Photos: Alexa Pudlo  
Flickr: alexapudlo

## *Bombus griseocollis*

brown-belted bumble bee



- **Nest:** under and above ground as well as in cavities
- **Queens:** active April - May and July - August
- **Workers:** active June - September
- **Identification:** yellow T1 band and an orange/brown T2 band
- Instead of a rusty colored band, Queens of this species can have a fully yellow T2 band



## *Bombus impatiens*

common eastern bumble bee



- **Nest:** underground
- **Queens:** active April - May and September - October
- **Workers:** active May - September
- **Identification:** yellow T1 band
- Our most common bumble bee!



### What To Plant!

- Goldenrod
- New England aster
- Bee balm
- Sweet Joe-Pye weed
- Cutleaf coneflower
- Hyssop